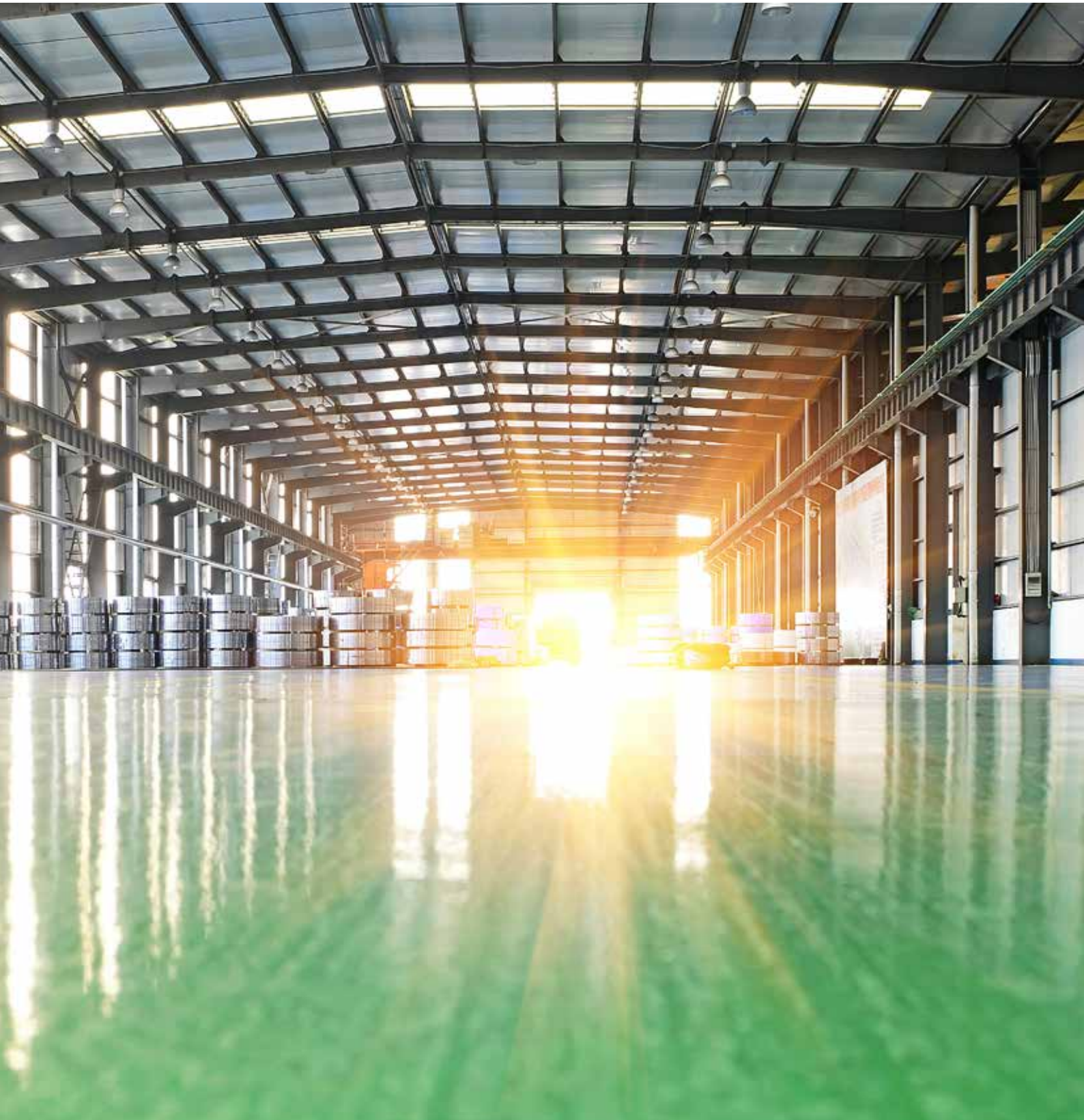




High Performance Flooring Projects



Worldwide Availability ▪ Industry Standard ▪ On-Site Technical Service ▪ Systems Warranties

Globally Proven Construction Solutions

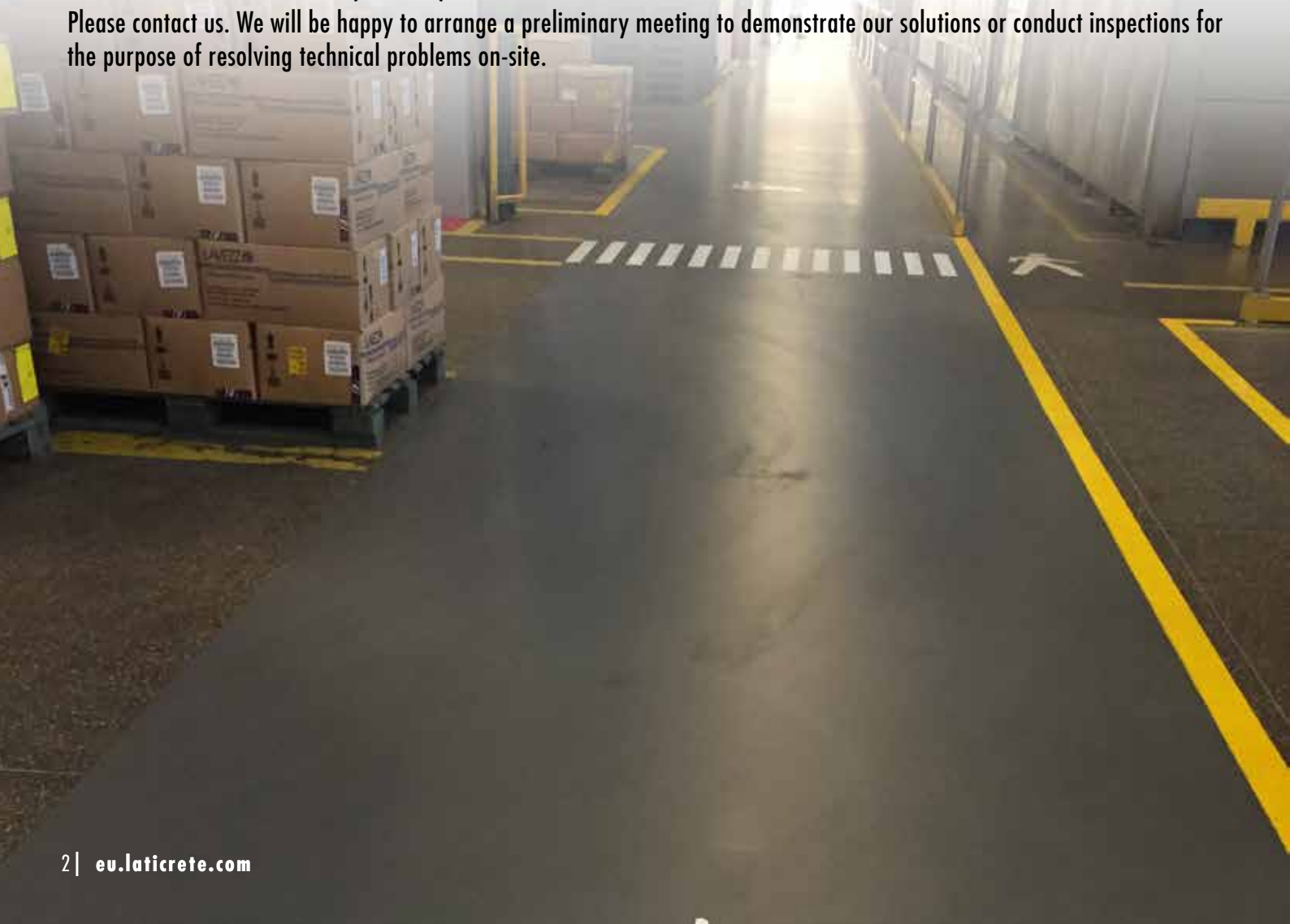
LATICRETE Europe srl has developed Flooring line, which includes various flooring systems that cater to the more specific customer needs: from the most comfortable residential flooring to hard-wearing high-traffic commercial and industrial solutions. Leaf through the catalog and discover how our flooring systems can meet all your aesthetic and functional requirements.

Our range of seamless resin- and mineral-based flooring and cladding solutions comprises the following products:

- Level GF, a revolutionary range of self-leveling and complementary products. "Green" by nature, they are used for creating seamless surfaces where a combination of high-level technical quality and creative flair achieves flooring of unique personality and the very highest performance, expression of eco-friendly contemporaneity.
- Rapid PA, POLYASPARTIC coatings which are extremely quick to apply. Highly resistant to mechanical, chemical and thermal stress (they remain intact up to a temperature of 150 degrees), they are normally used in food, chemical and pharmaceutical industries.
- Build EP, these are EPOXY coatings we habitually apply in residential and industrial contexts thanks to their high mechanical strength and chemical resistance.
- Flow PU, POLYURETHANE-based coating featuring high-performance polymers able to create tough, hard-wearing surfaces with a stylish finish, increasingly in demand in the world of design.
- Deck WP, of a hot and cold Poliureic nature, these systems are mainly used in the waterproofing of large roofs, but they are also widely used in indoor environments when they require speed of execution, impermeability and aesthetics.

Our seamless flooring systems offer extraordinary aesthetic results with unrivalled technical performance and no limits as to dimensions or choice of colors (RAL-NCS).

Please contact us. We will be happy to arrange a preliminary meeting to demonstrate our solutions or conduct inspections for the purpose of resolving technical problems on-site.





Green Flooring System

Marmo liquido - l'alternativa ecologica *Liquid Marble - the Eco-Friendly Alternative*

Questi sistemi sono basati su ECO-Binder, la tecnologia che sostituisce il cemento Portland, a bassissimo contenuto VOC. Tutti i componenti sono di natura minerale e conferiscono alla pavimentazione caratteristiche uniche che fondono alte prestazioni a effetti di design artistici e personalizzati. Completato il ciclo Surface GF l'effetto pietra naturale ottenuto ha una eccezionale durezza e resistenza che garantiscono lunga durata nel tempo.

La gamma è prodotta in Europa e, data la sua composizione e formulazione è accreditata GEV EMI-CODE in categoria EC1Plus.

La vasta conoscenza dei diversi sistemi disponibili sul mercato, diversi anni di sperimentazione uniti al suo know-how ha permesso a LATICRETE di mettere a punto questa rivoluzionaria soluzione flooring che, per le sue caratteristiche di resistenza meccanica e chimica, può essere utilizzata in ambito civile e commerciali, con personalizzazioni estetiche e artistiche uniche o in ambienti industriali.

This product range is based on ECO-Binder technology that replaces Portland cement, is very low VOC and gives the products unique chemical and physical characteristics along with the perfect flowable stone effect finish, without joints.

While the finish is perfection, the durability and strength of the system means that your floor maintains a high gloss finish over many decades, whether residential or commercial projects.

The range provides the contractor the benefit of an easier and more efficient environmentally friendly flooring system, at the same time extremely innovative.

The range is produced in Europe, with a low carbon footprint and low VOC, the products achieve the GEV Ecode EC1Plus accreditation and do not require hazard labeling. Several years of experience and know-how are necessary when selecting and installing an industrial floor. Extensive knowledge of the different systems available in the market is required. An industrial flooring system should have high impact strength, good abrasion resistance, without cracks and shrinkage.

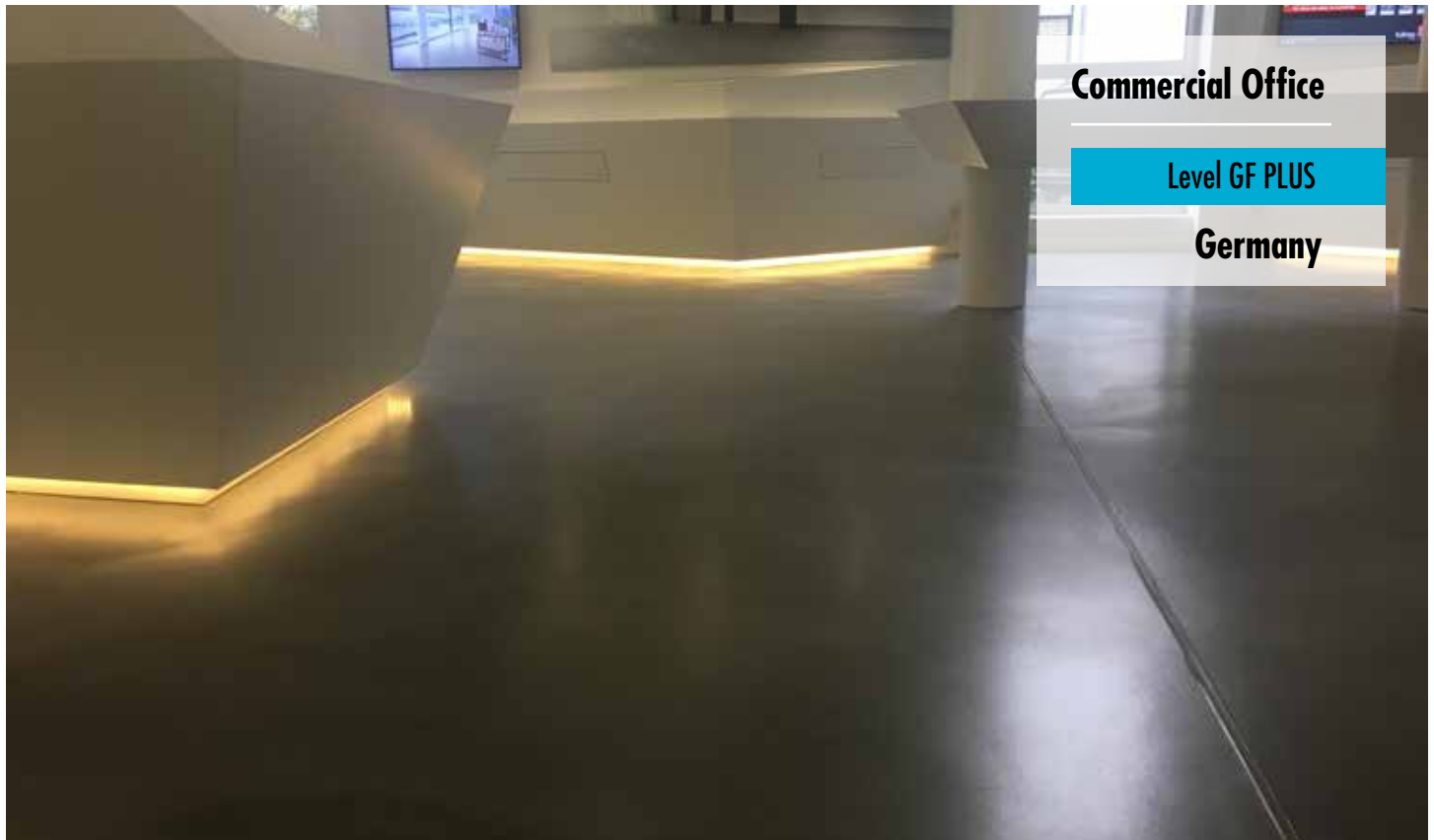
With many years of research and fullscale tests, we are able to offer you an optimal solution for almost any flooring project. Green Flooring Systems are suitable for industrial areas but also in civil and commercial environments. They can be mixed and applied manually or by pump.



Commercial Office

Level GF HARD

Germany



Commercial Office

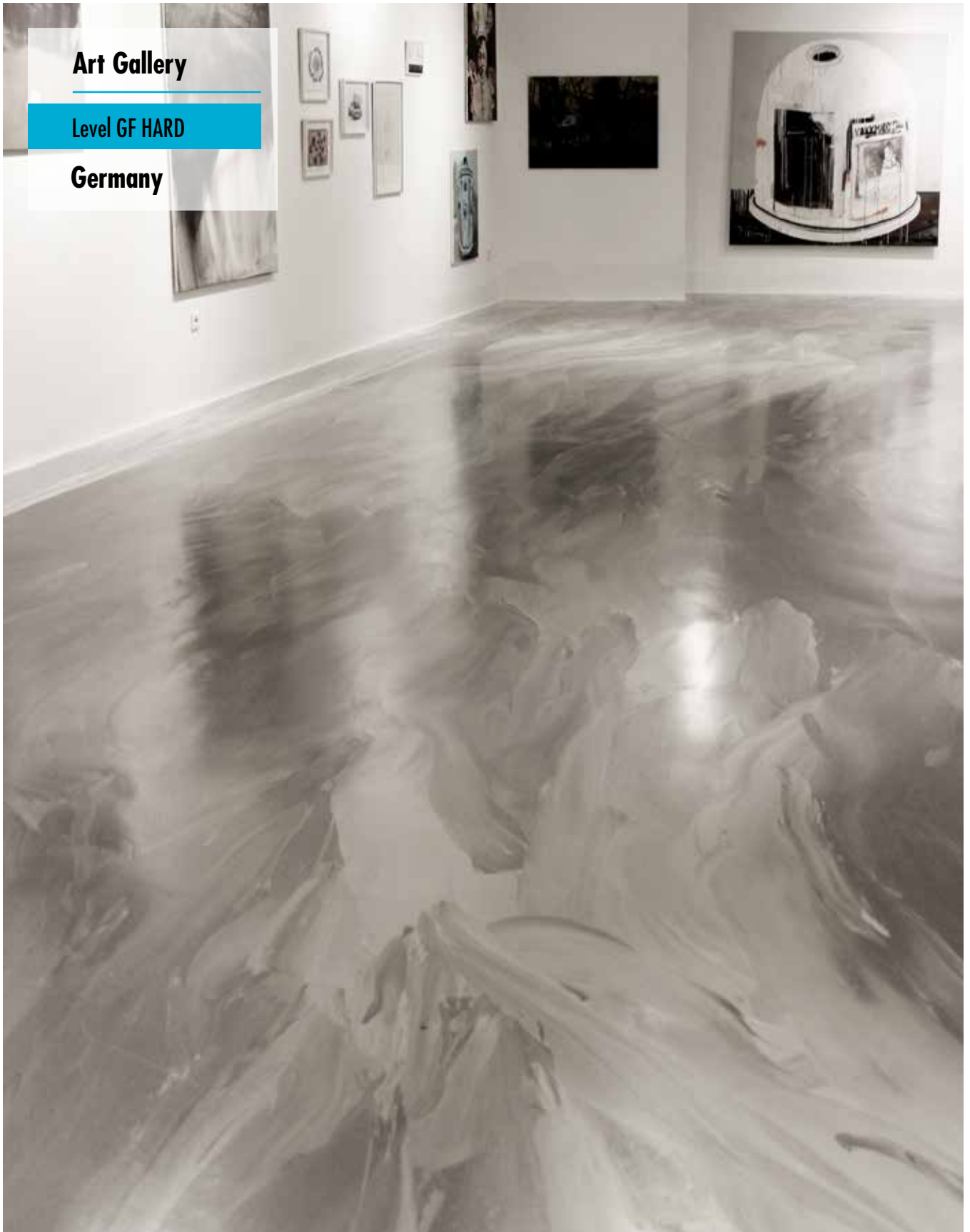
Level GF PLUS

Germany

Art Gallery

Level GF HARD

Germany



LEVEL GF

Showroom

Level GF PLUS

USA





Museum

Level GF PLUS

USA



Art Gallery

Level GF PLUS

Germany



Rivestimenti Epossidici

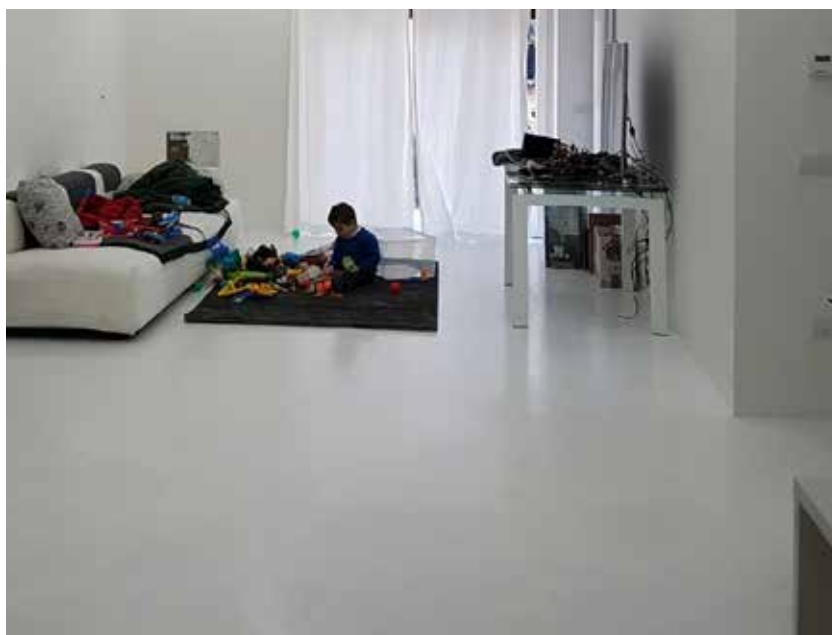
Epoxy Floors

Decorativo - Materico / *Decorative - Textured*

I nostri pavimenti epossidici vengono utilizzati sia nell'ambito residenziale per il loro effetto materico monocromatico e decorativo, sia nel settore industriale grazie alla loro notevole resistenza meccanica, e chimica.

With their decorative, monochromatic textured effect, our epoxy flooring solutions are the ideal choice for both residential room settings and industrial environments, thanks to their remarkable mechanical strength and chemical resistance.

Build
EP



Canteen

Build EP TEXTURE

Brazil



Parking Garage

Build EP INDUSTRY

Italy

Beverage Plant

Build EP INDUSTRY

Mexico



Car Dealer

Build EP INDUSTRY

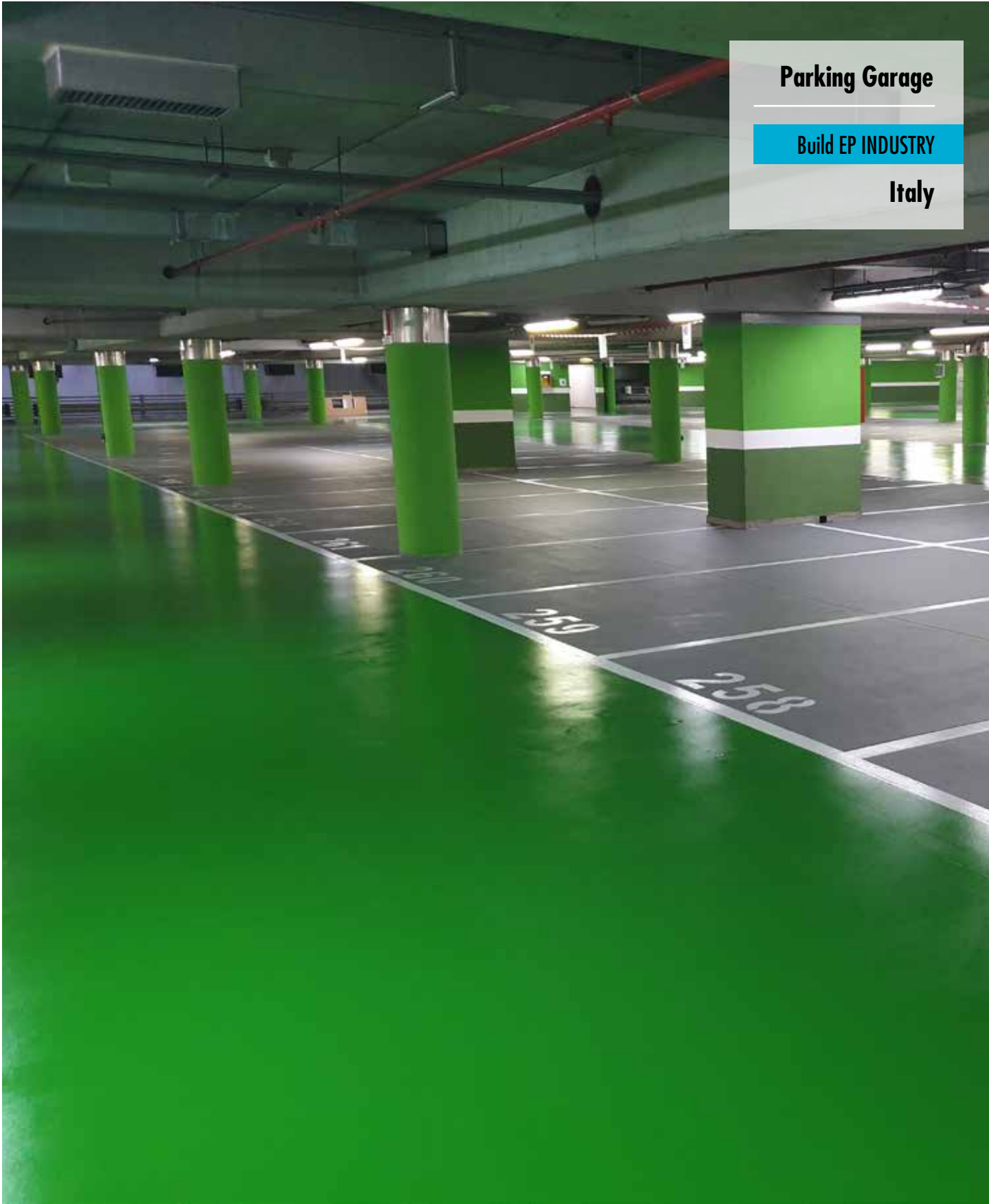
Brazil



Office

Build EP INDUSTRY

Brazil



Parking Garage

Build EP INDUSTRY

Italy



Rapid
PA

Rivestimenti Poliaspartici Polyaspartic Floors

Ultrarapido - Massima resa / Ultra-rapid - Maximum yield

I sistemi di rivestimenti Poliaspartici *Surface PA* offrono i seguenti vantaggi:

- **Indurimento rapido.**
Surface PA asciuga nell'arco di 1-2 ore ed è calpestabile in 24 ore.
- **Resilienza di qualità superiore che dura nel tempo.**
Dopo la reticolazione finale, *Surface PA* possiedono un'elevata resistenza chimica e meccanica.

- **Mantenimento di colore e lucentezza.**
Le mani di finitura trasparenti *GUARD PA CLEAR* o pigmentate con i *PIGMENTI PA* sono resistenti ai raggi UV e mantengono a lungo una finitura ricca che non scolorirà, non ingiallirà e non si staccherà.

- **Adesione al calcestruzzo di qualità superiore.**
La tecnologia *GUARD PA* è stata concepita per essere assorbita efficacemente nel sottofondo di calcestruzzo o acciaio e aderire all'interno dei pori del materiale. Un componente essenziale che contraddistingue i prodotti Poliaspartici *LATICRETE®* dagli altri. Questa tecnologia tiene conto dell'area della superficie di adesione massima e sta alla base delle nostre prestazioni di qualità superiore.

- **Resistenza alle aggressioni chimiche:**
GUARD PA resiste ad un'ampia gamma di sostanze chimiche commerciali. Massima resistenza allo Skydrol e ad altri liquidi altamente corrosivi.

Surface PA Polyaspartic coatings provide the following advantages:

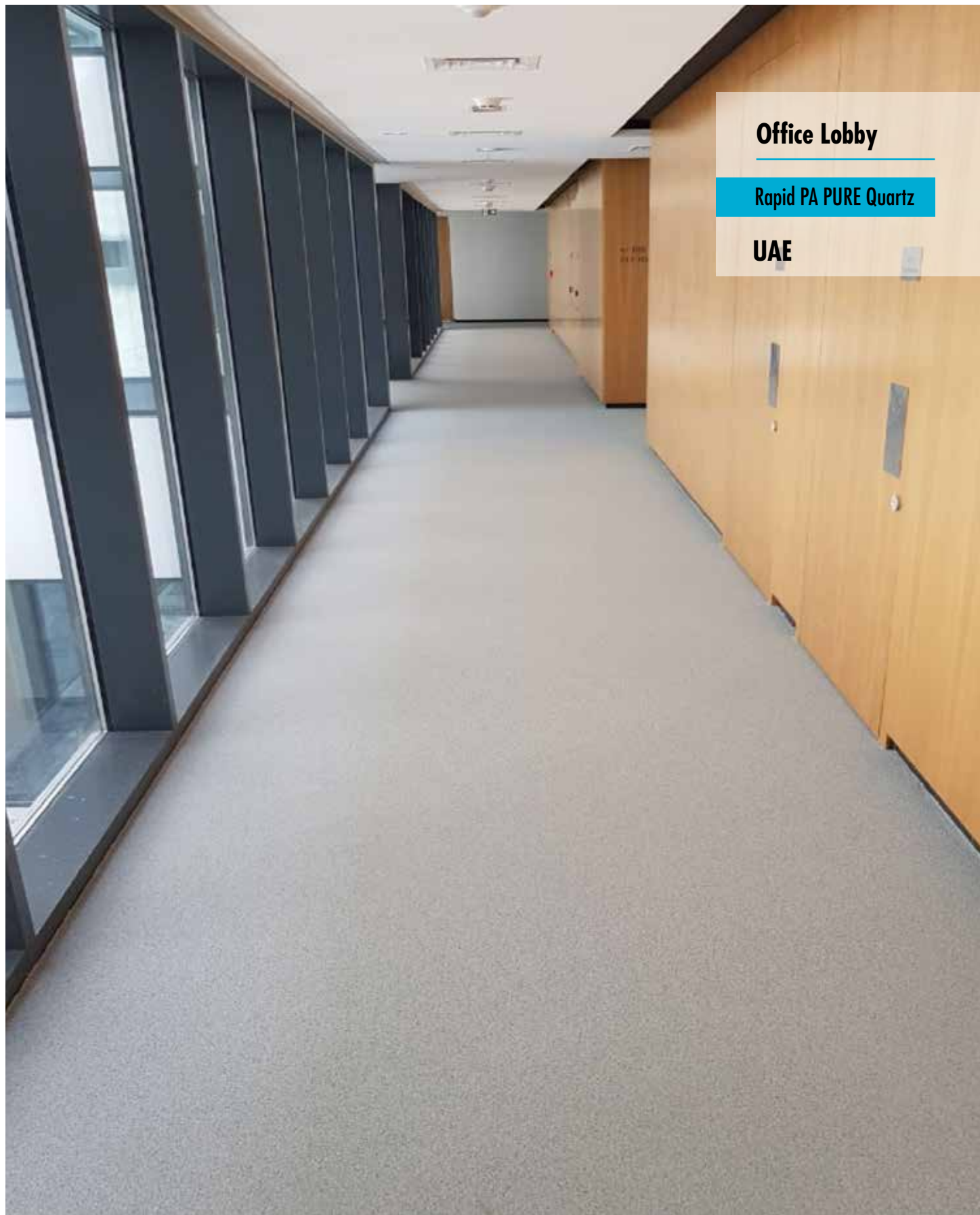
- **Fast hardening.**
Surface PA dries in about 1-2 hours and is treadable after 24 hours.
- **Long-lasting, superior quality resilience.**
After final cross-linking, *Surface PA* possesses high chemical resistance and mechanical strength.

- **Maintains both color and gloss.**
The finishing coats (which can be transparent using *GUARD PA CLEAR* or pigmented with *PIGMENTI PA*) are UV-resistant and maintain their lustrous appearance over time, since they do not fade or become yellowed and will not detach.

- **Superior quality adhesion to concrete.**
Thanks to the technology on which it is based, *GUARD PA* becomes absorbed into the concrete or steel substrate and adheres within the pores of the material. An essential feature that distinguishes *LATICRETE® Polyaspartic products* from the others. Technology which takes account of the maximum adhesion area and on which our superior quality performance is based.

- **Resistance to chemical attack:**
GUARD PA is resistant to a broad variety of commercial chemicals. Maximum resistance to Skydrol and other highly corrosive liquids.





Office Lobby

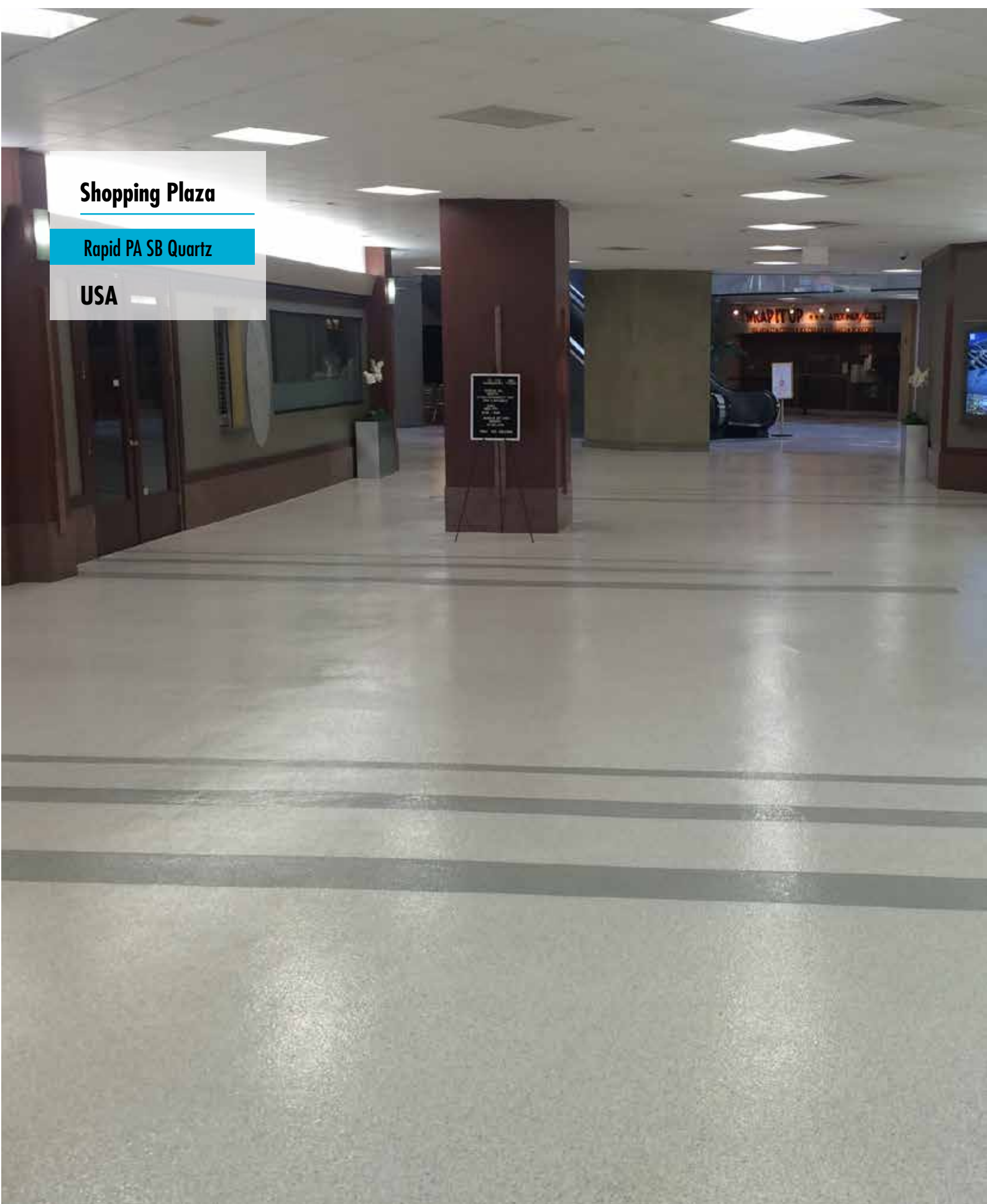
Rapid PA PURE Quartz

UAE

Shopping Plaza

Rapid PA SB Quartz

USA





Sports Center

Rapid PA PURE Quartz

USA

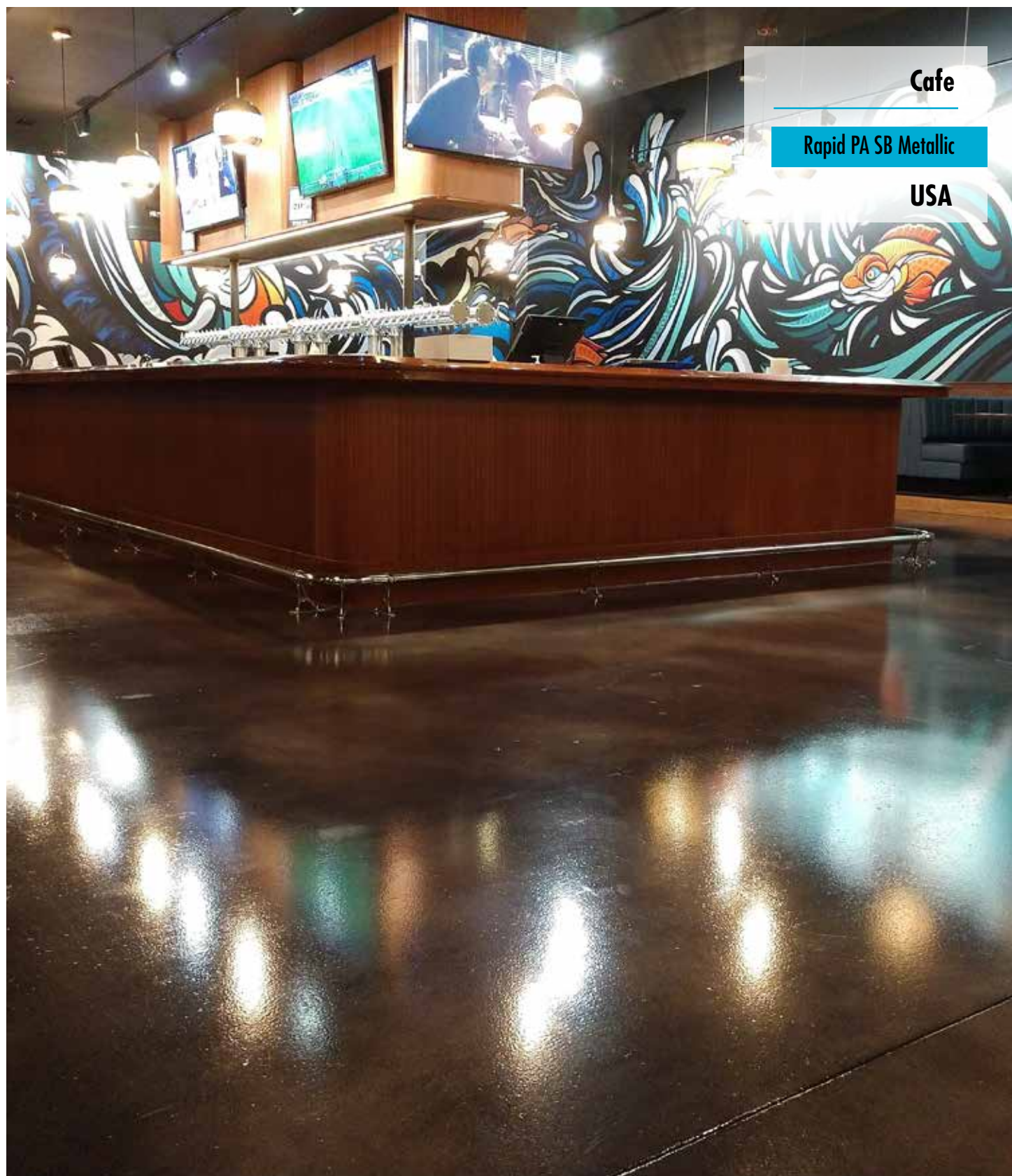
Restaurant

Rapid PA SB Quartz

Costa Rica



RAPID PA



Cafe

Rapid PA SB Metallic

USA



Commercial Office

Rapid PA SB Metallic

UAE

Showroom

Rapid PA PURE Metallic

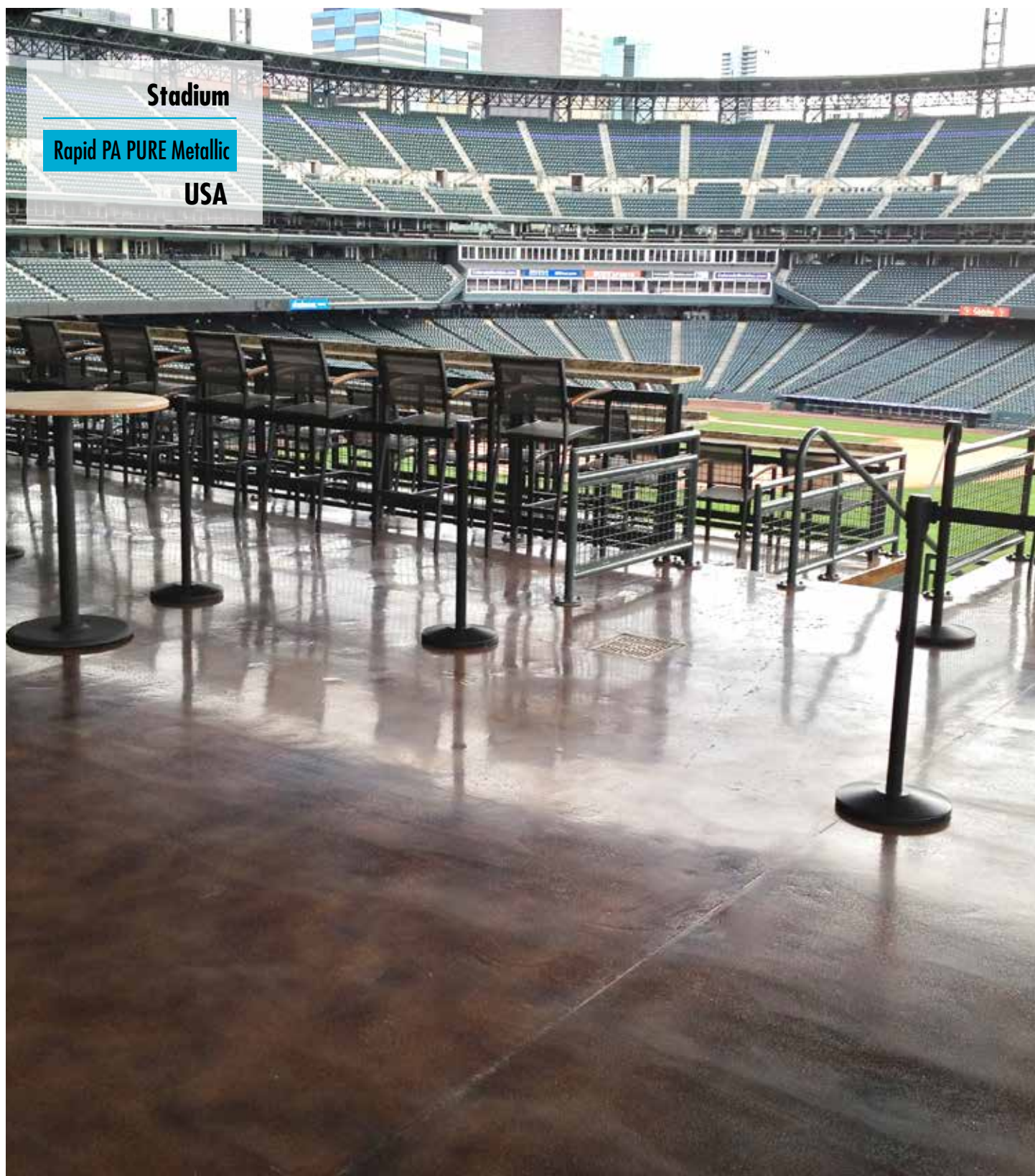
USA

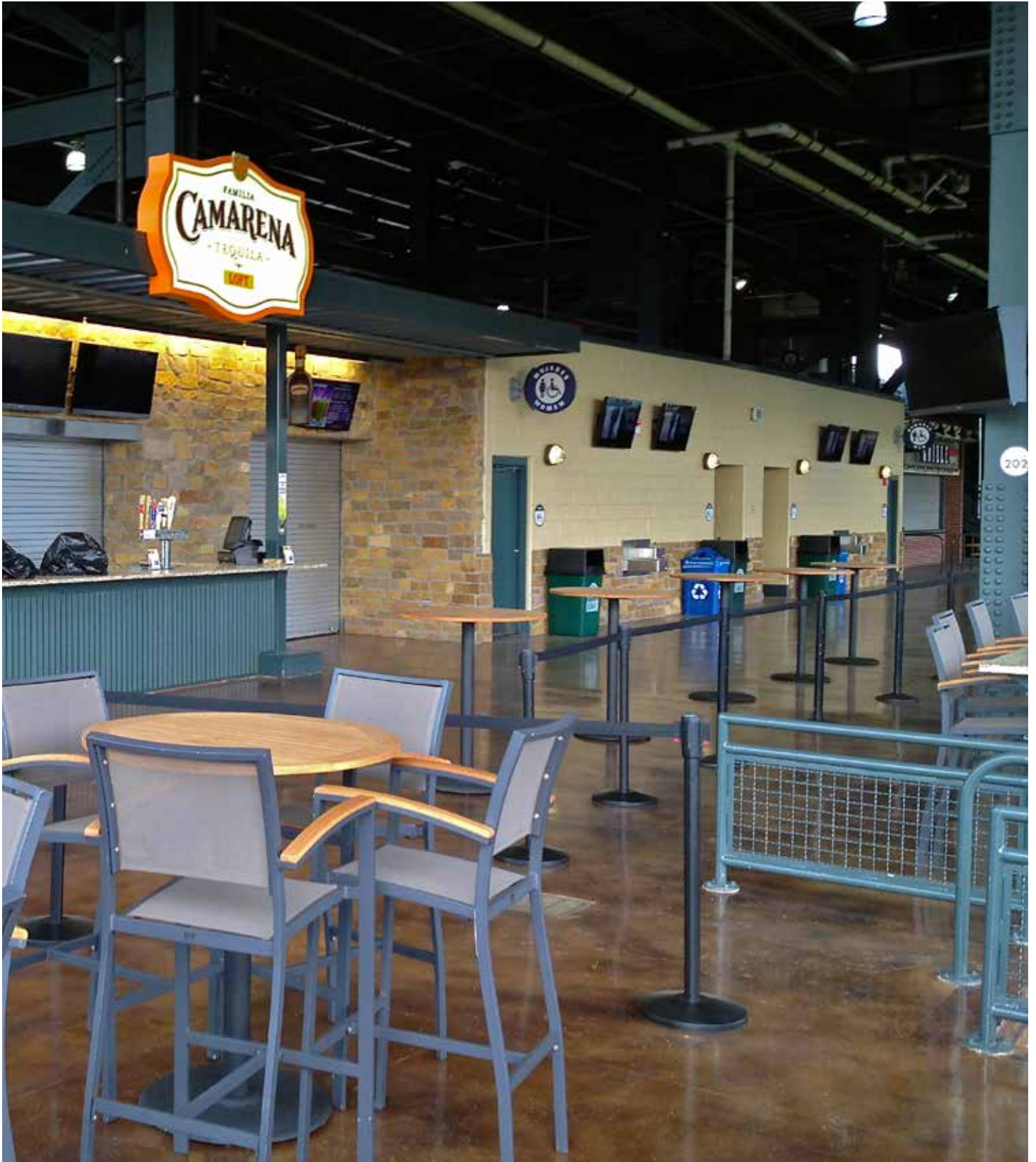


Stadium

Rapid PA PURE Metallic

USA





RAPID PA

Car Dealership

Rapid PA PURE Flake
Rapid PA PURE Metallic

USA



Showroom

Rapid PA PURE Flake

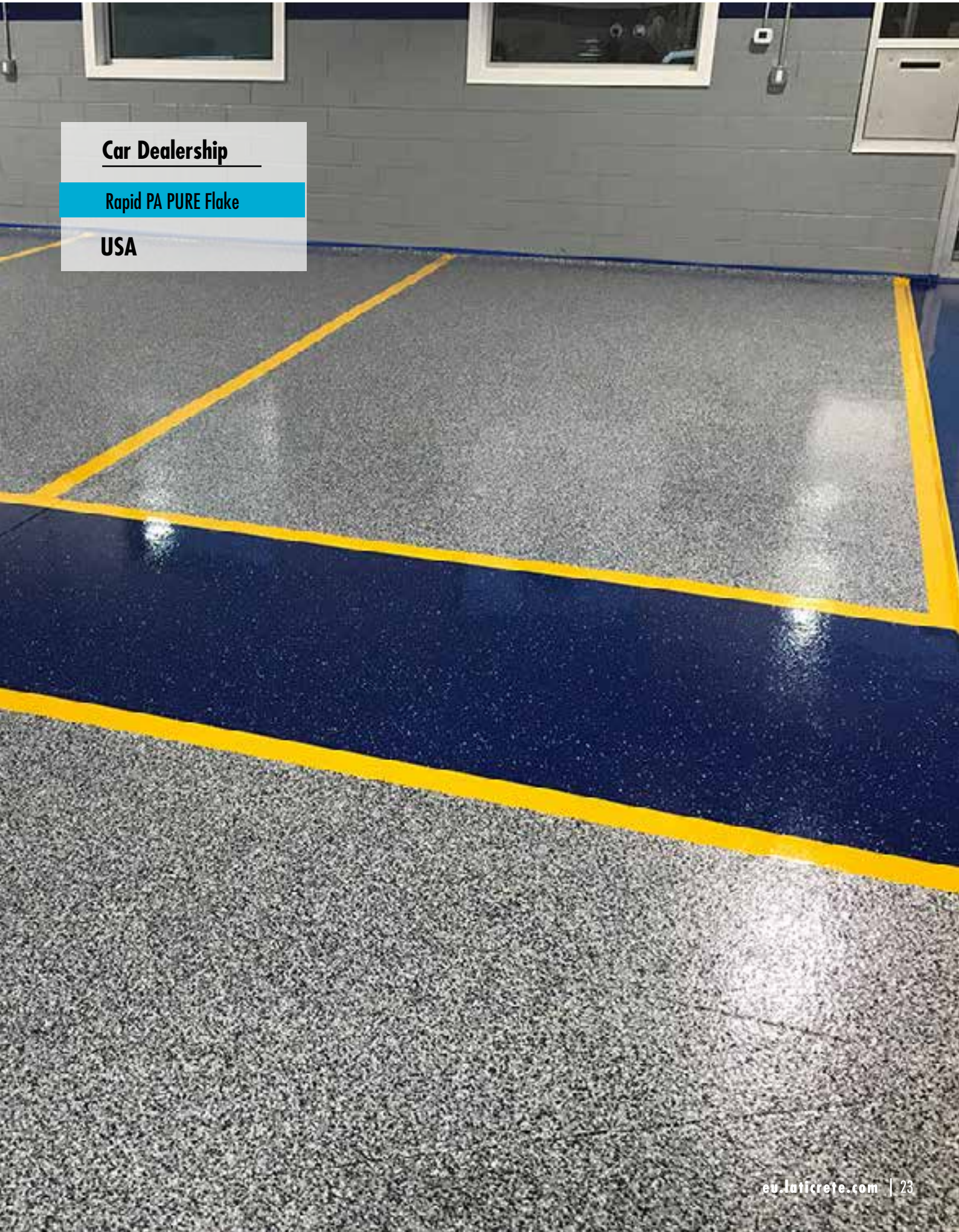
USA



Car Dealership

Rapid PA PURE Flake

USA





Residential

Rapid PA PURE Flake

USA



Retail

Rapid PA SB Flake

USA

Residential Garage

Rapid PA PURE Flake

USA



RAPID PA



Brewery

Rapid PA PURE Flake

USA

Showroom

Rapid PA PURE Metallic

Brazil





Retail Outlet

Rapid PA PURE Guard

Turkey

Cycle Lane

Rapid PA SB Guard

Turkey



Race Car Garage

Rapid PA PURE Guard

USA



Parking Garage

Rapid PA SB Guard

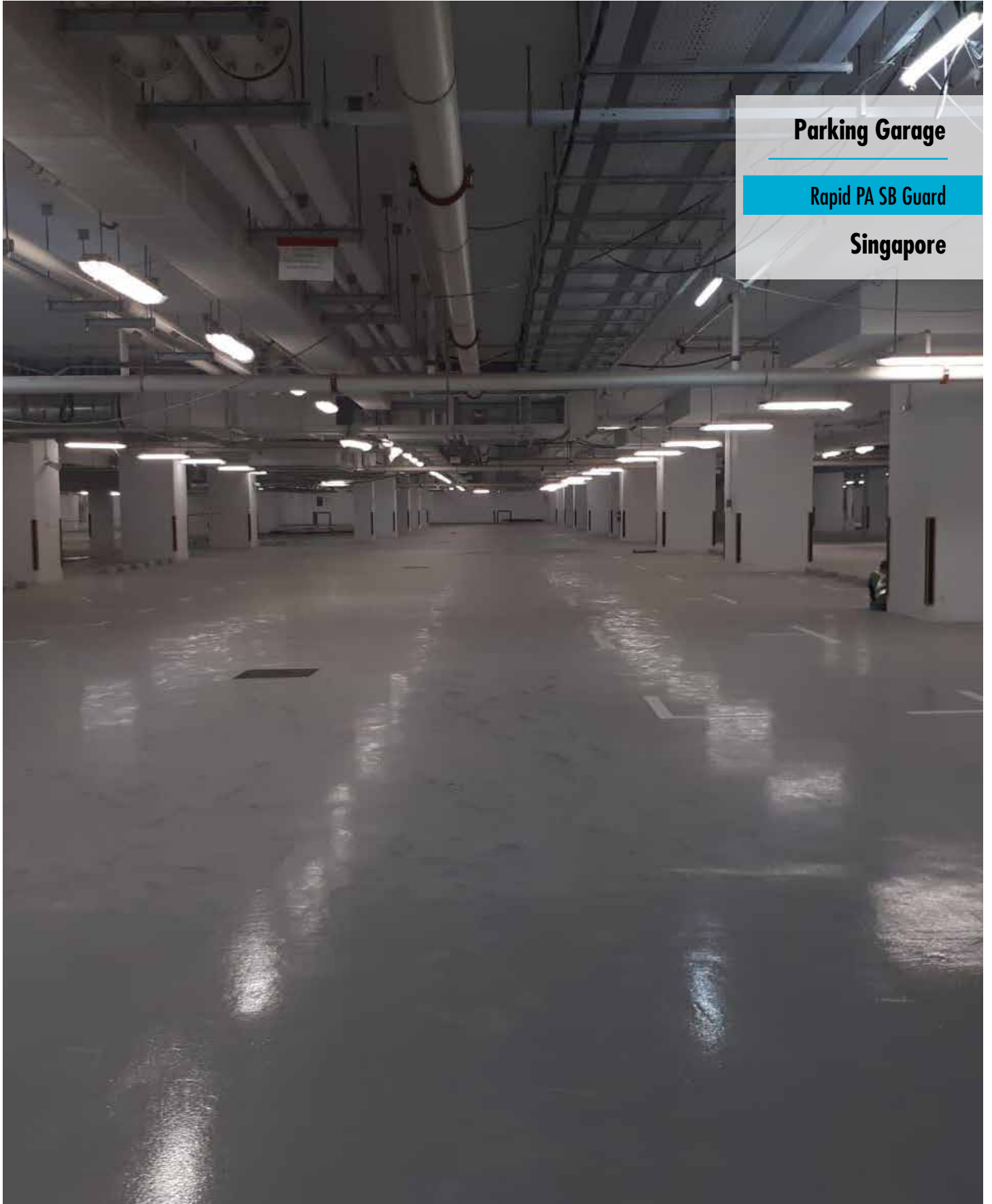
USA



Parking Garage

Rapid PA SB Guard

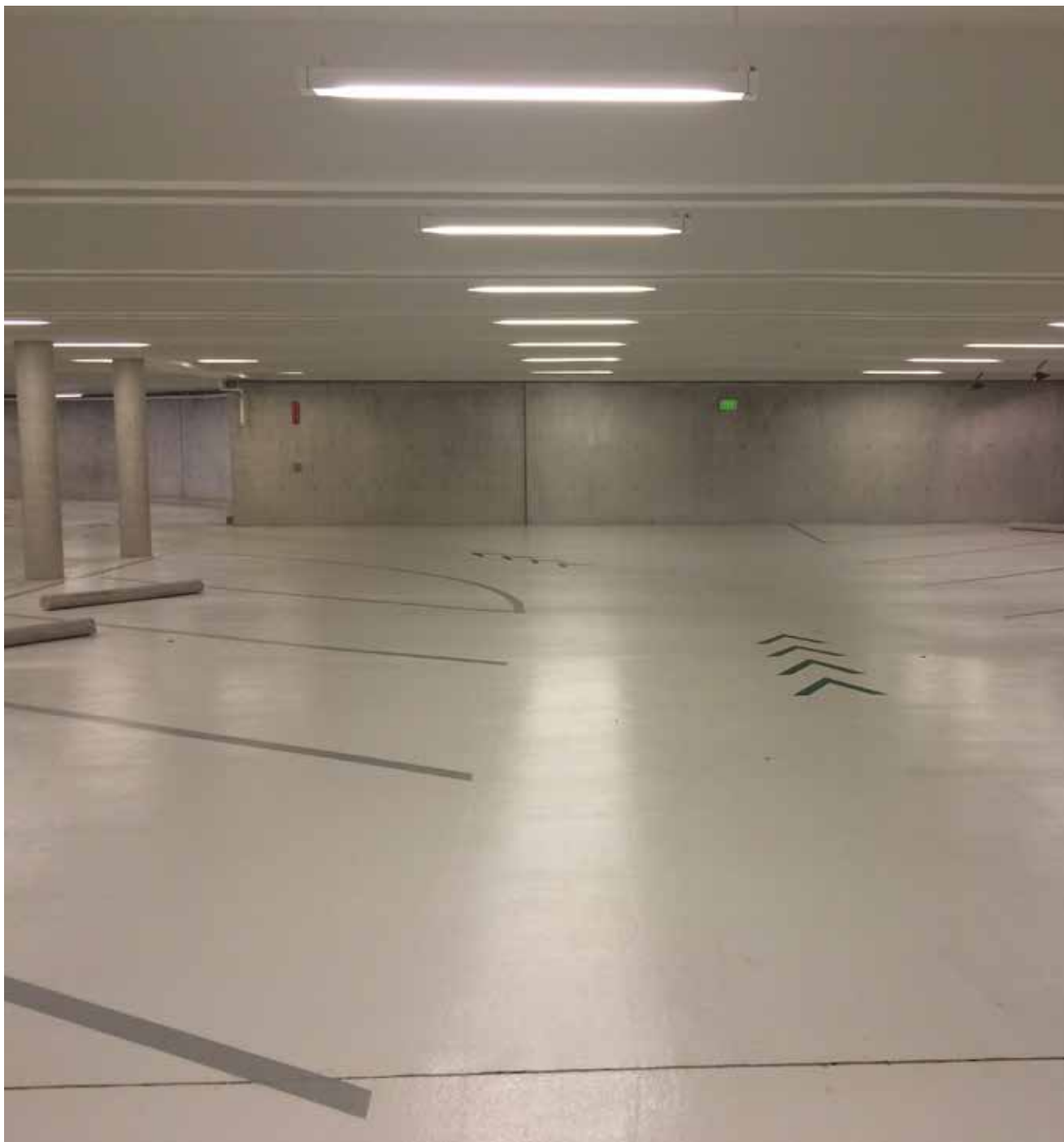
Italy



Parking Garage

Rapid PA SB Guard

Singapore



Parking Garage

Rapid PA PURE Guard

USA



Aircraft Hanger

Rapid PA PURE Guard

USA



Parking Garage

Rapid PA PURE Guard

China

RAPID PA

Garage

Rapid PA PURE Guard

USA



Parking

Rapid PA SB Guard

Italy

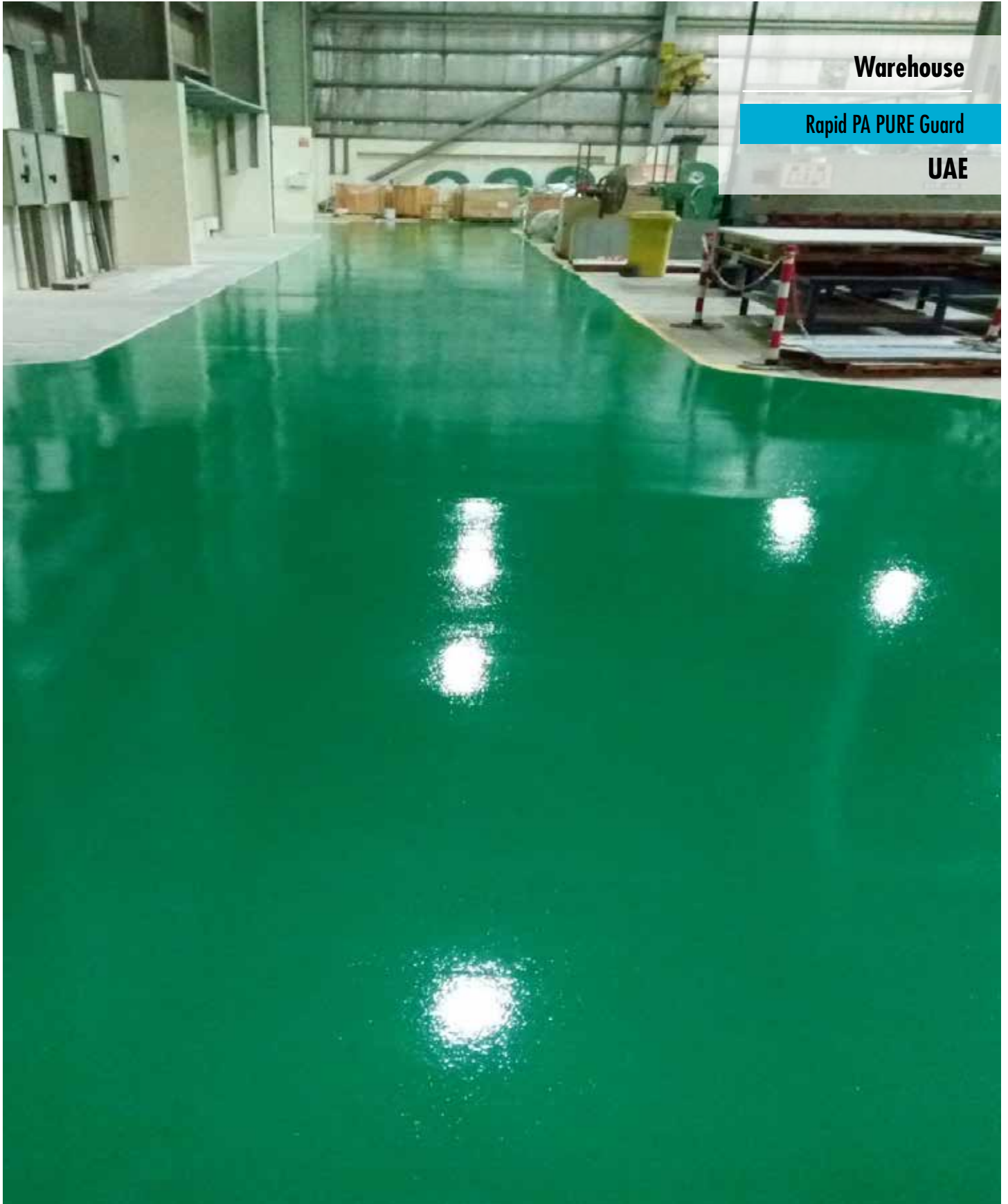


Plant

Rapid PA SB Guard

Italy





Warehouse

Rapid PA PURE Guard

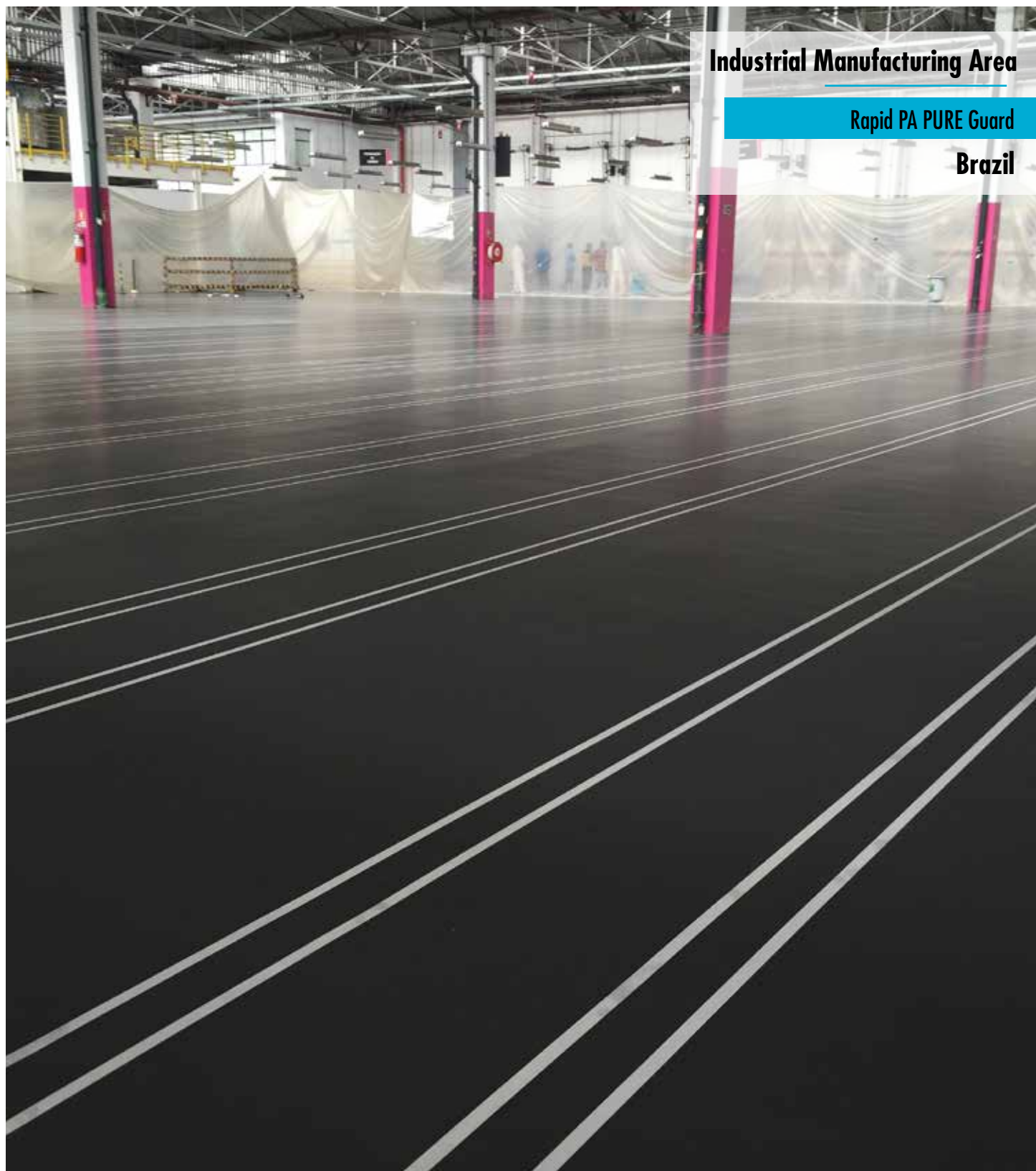
UAE



Basketball Court

Rapid PA PURE Guard

USA



Industrial Manufacturing Area

Rapid PA PURE Guard

Brazil



Warehouse

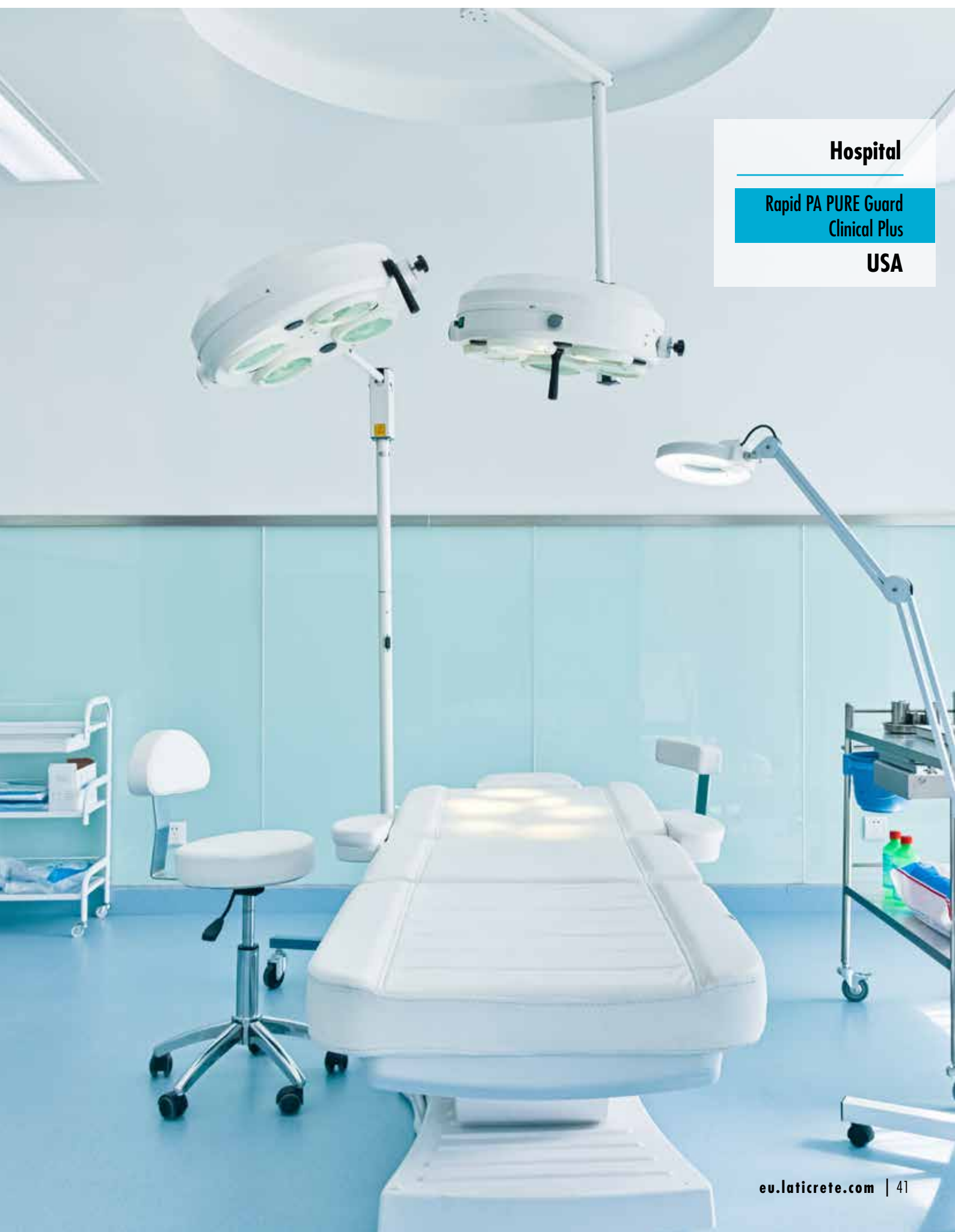
Rapid PA PURE Guard

Italy

Hospital

Rapid PA PURE Guard
Clinical Plus

USA

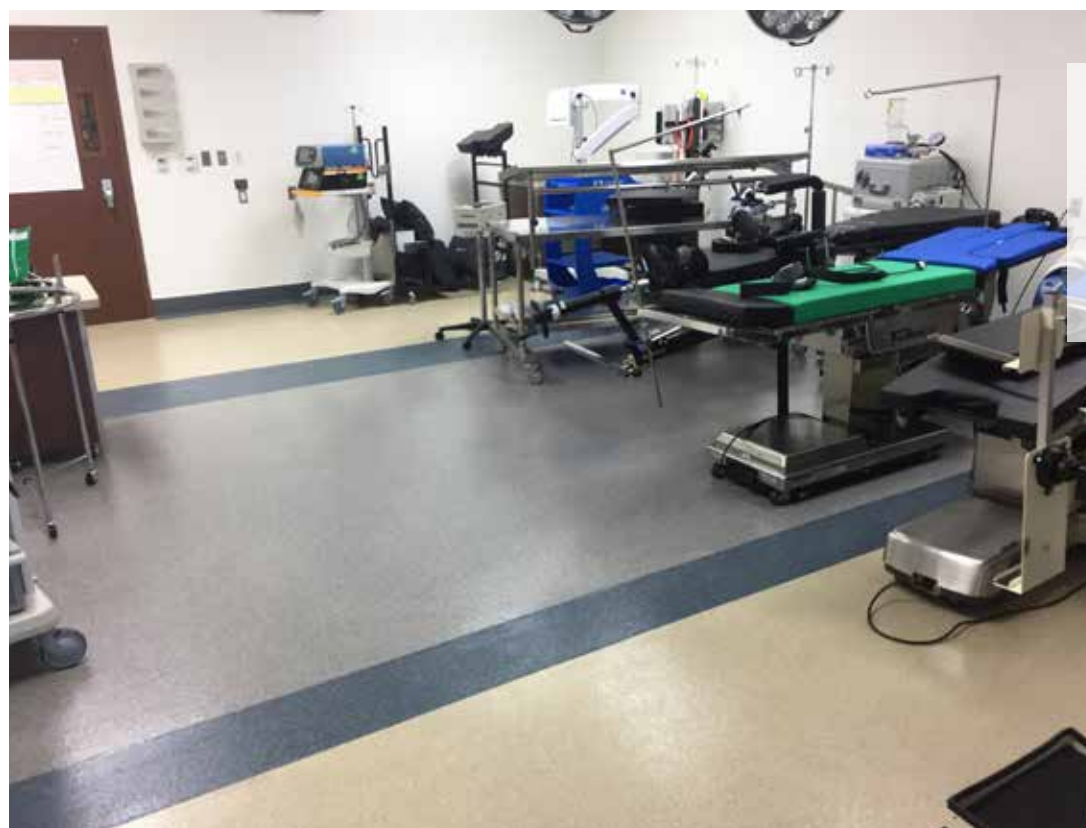




Hospital

Rapid PA PURE Guard
Clinical Plus

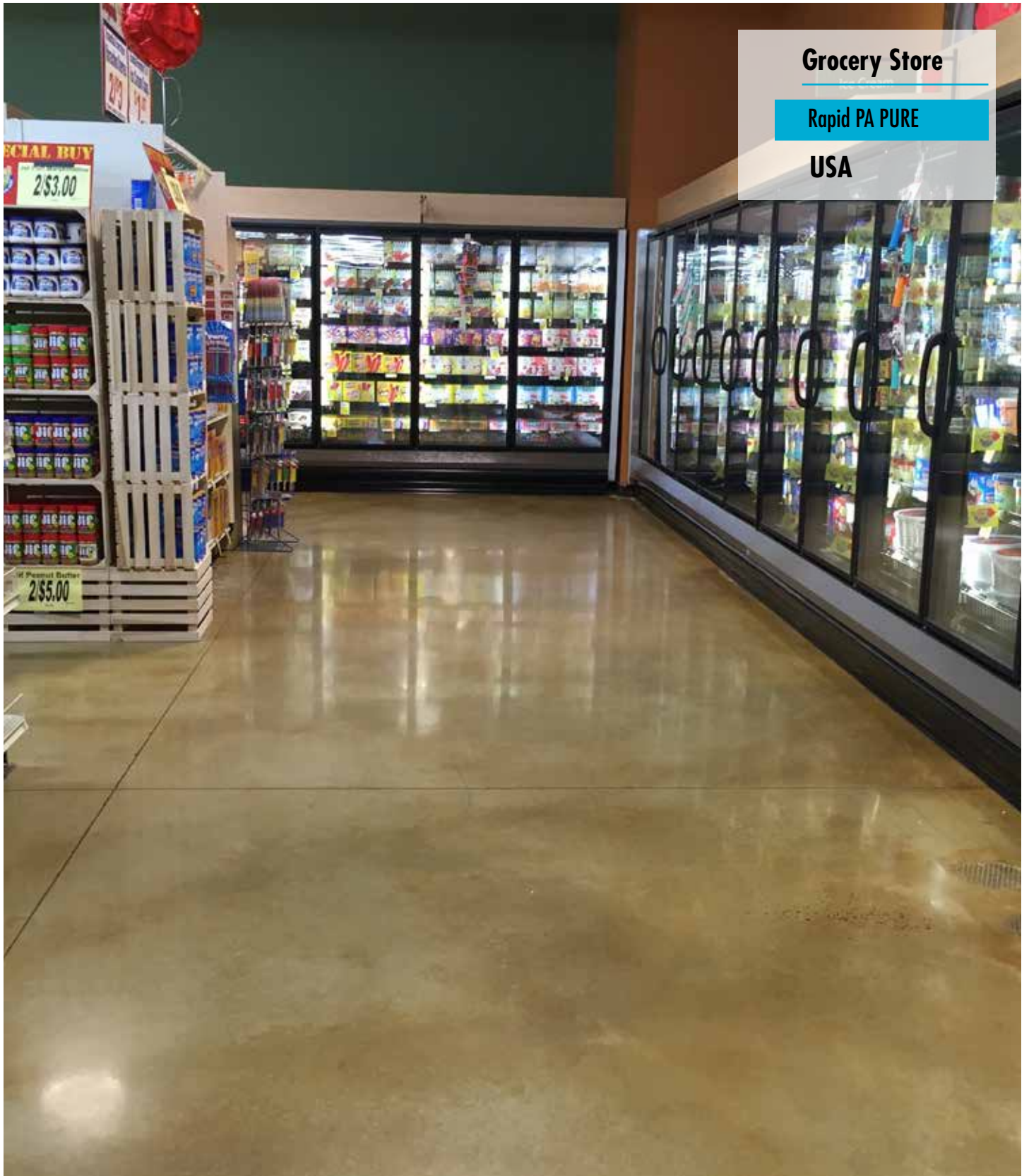
USA



Hospital

Rapid PA PURE Guard
Clinical Plus

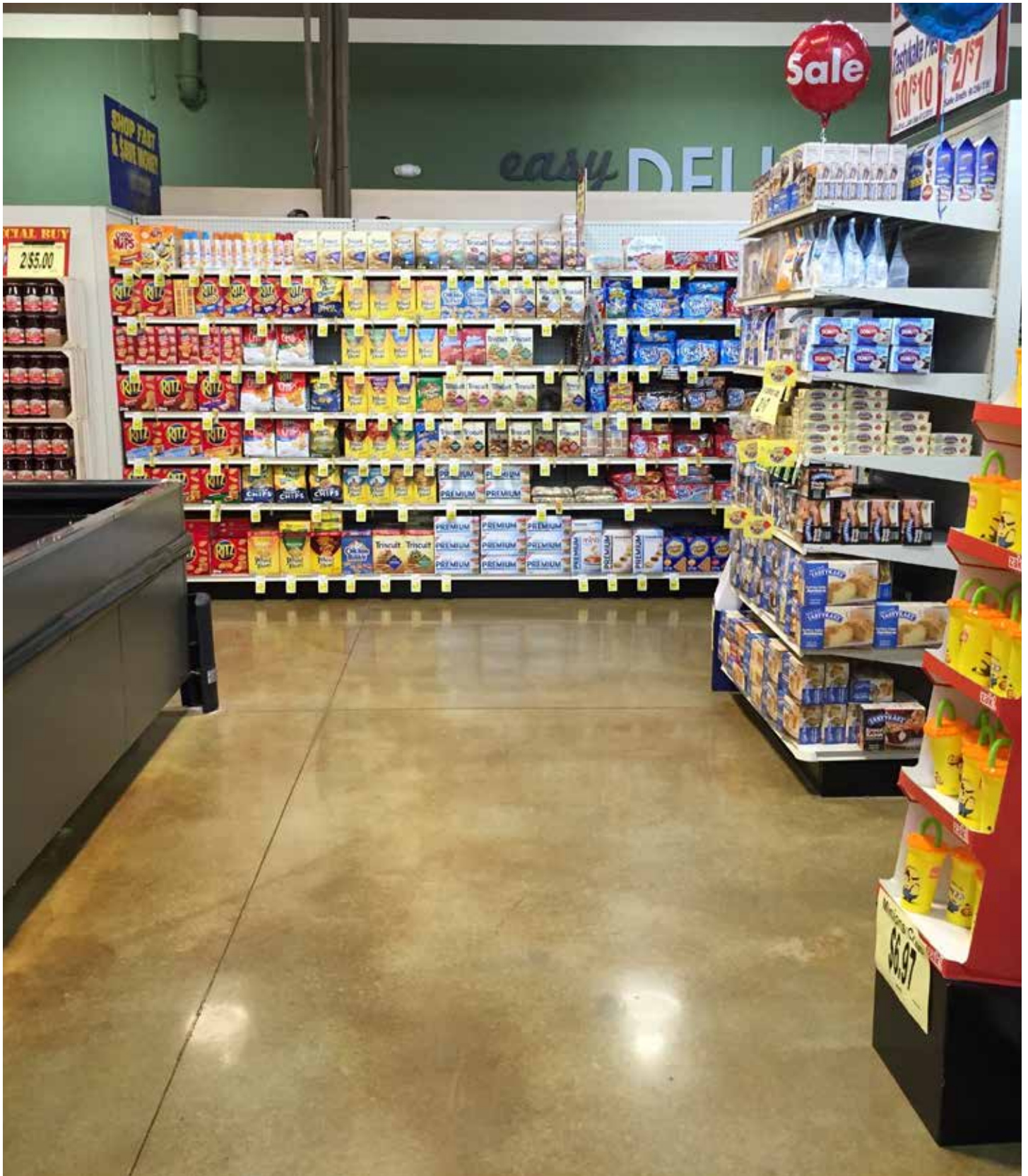
USA



Grocery Store

Rapid PA PURE

USA





Rivestimenti Poliuretani

Polyurethane Floors

Flow
PU

Confortevole ed elastomerico / Easeful and elastomeric

I pavimenti poliuretani di natura sono elastici, al tatto hanno un elevato confort oltre ad essere durevoli e facili da pulire, per questo sono utilizzati per il settore sanitario scolastico, pubblico, commerciale e residenziale.

Polyurethane floors are elastic by nature. They are very pleasant to touch, while being durable and easy to clean. This is why they are widely used in the healthcare sector, in schools, public premises, commercial and residential contexts.





Office

Flow PU

Brazil



LEVEL MAXI

Warehouse

LEVEL MAXI
Rapid PA PURE Guard

Bosnia Herzegovina





Grocery Store

LEVEL MAXI

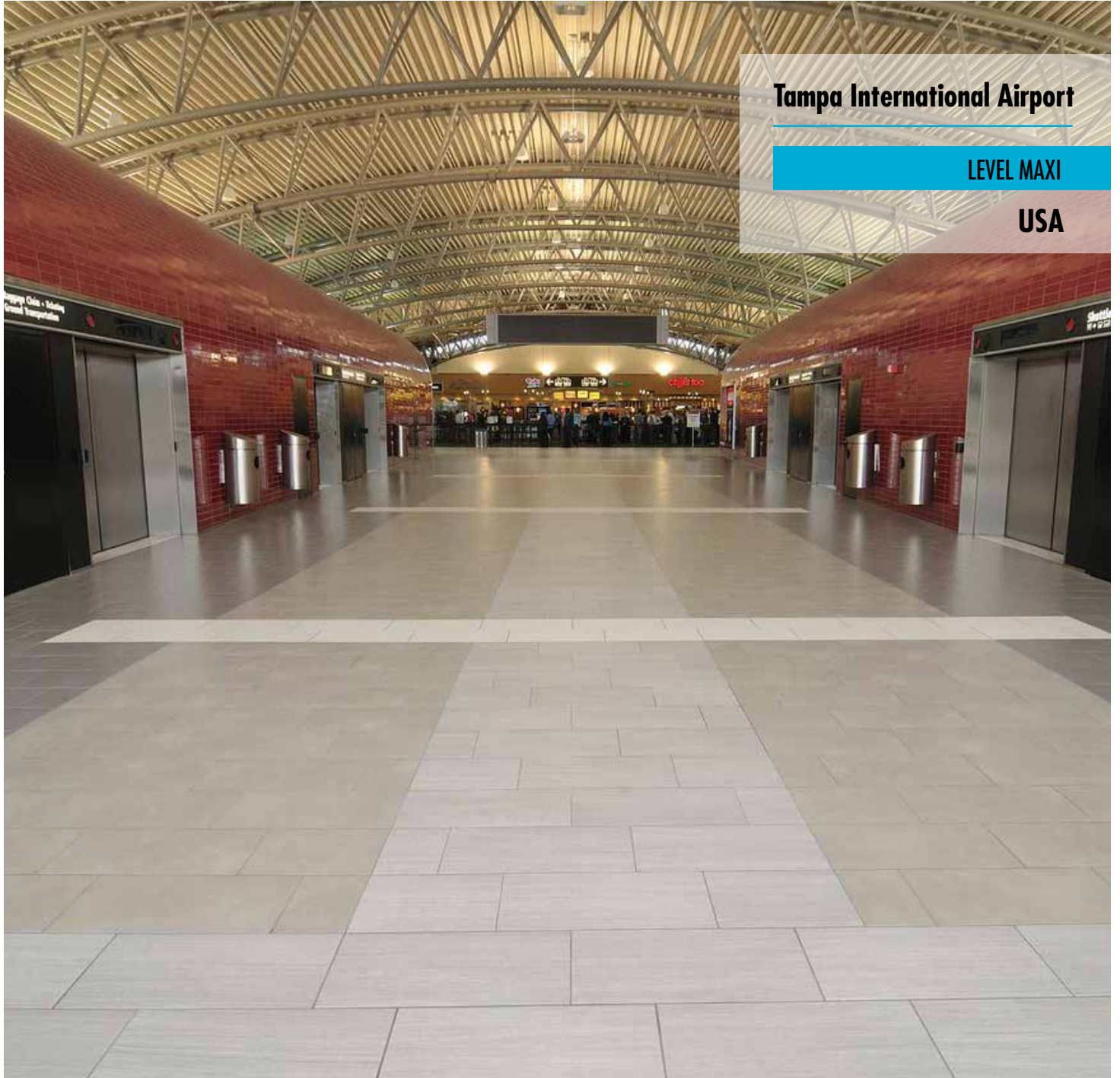
Barbados



Hotel Ballroom

LEVEL MAXI

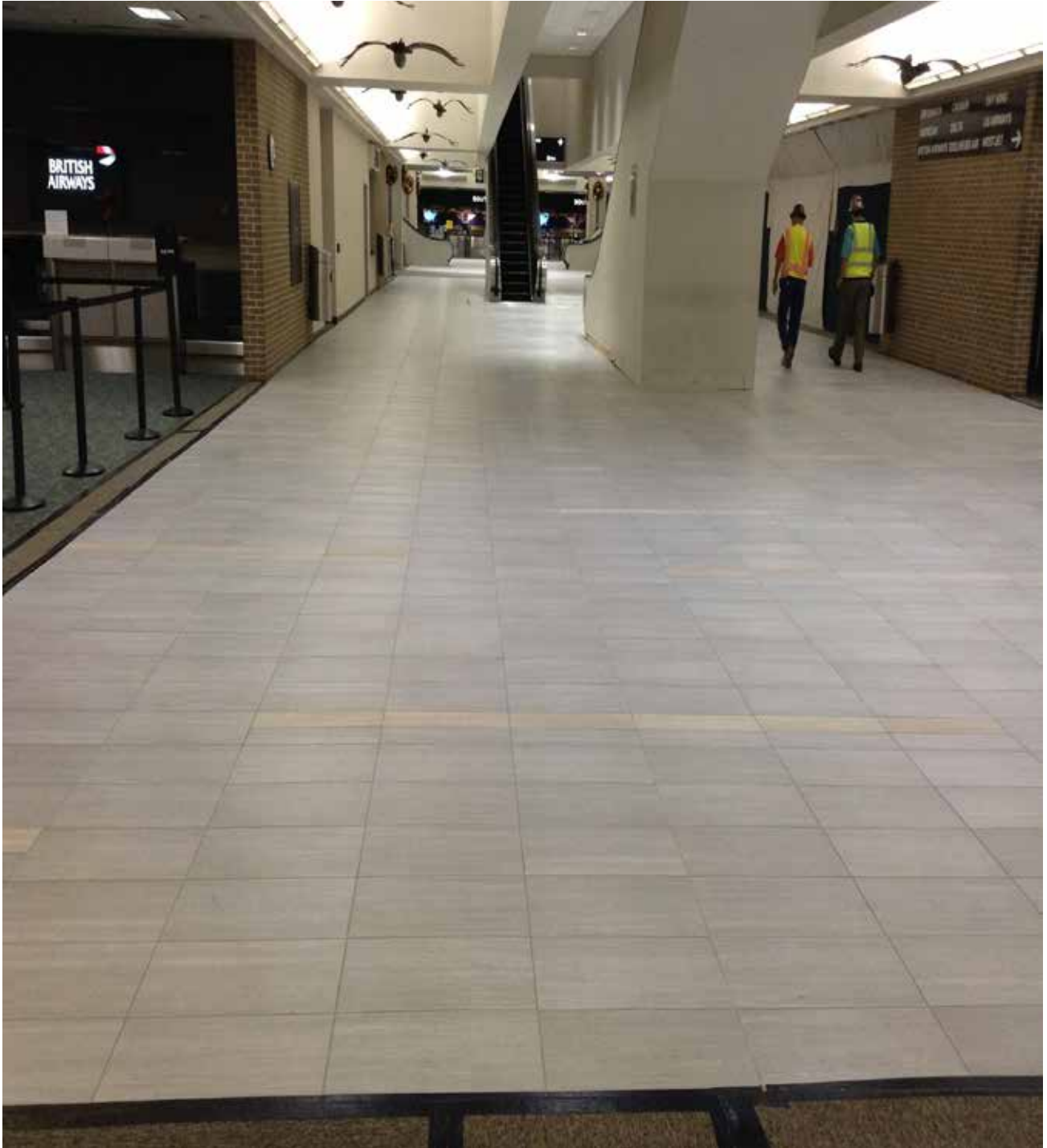
UAE



Tampa International Airport

LEVEL MAXI

USA



TEXAS
MOTOR SPEEDWAY



LATICRETE EUROPE S.R.L. · Via Borgogna no.8, 20122 Milano Italy · +39 059 557680 · info@laticreteurope.com · www.laticrete.eu

©2019 LATICRETE International, Inc. All trademarks shown are the intellectual properties of their respective owners.